

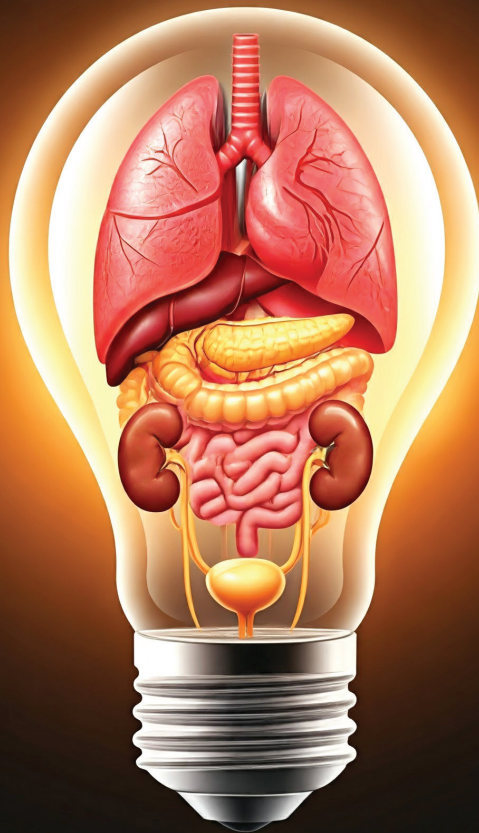
**UCLA**

**David Geffen School of Medicine**

# 5th UCLA Solid Organ Transplant Symposium

Innovations and Updates

*An In-Person and Live Virtual Education Conference*



Friday, June 6, 2025  
Ronald Reagan UCLA Medical Center  
Tamkin Auditorium (B-Level)  
757 Westwood Plaza  
Los Angeles, CA 90095



# 5th UCLA Solid Organ Transplant Symposium

## Innovations and Updates

### *An In-Person & Live Virtual Education Conference*

#### Course Description

The UCLA Solid Organ Transplant Symposium is an **in-person & virtual** education conference coordinated through UCLA Health Department of Transplant Services, the UCLA Center for Continuing Professional Development and the UCLA Transplant Multi-Disciplinary teams. The goal of this program is to provide a forum for UCLA Transplant multidisciplinary team experts to share updates to current practices and information on recent innovations that enhance transplant and patient outcomes.

#### Target Audience

The target audience for this symposium is health care professionals who provide care for patients pre- and post-transplant including: Heart, Lung, Liver, Kidney, Pancreas and Intestinal/Multivisceral transplantation. The symposium content is designed for local community physicians, transplant nurses, transplant nurse coordinators, administrators, nurse practitioners, pharmacists, social workers, dietitians and all members of the transplant team to guide and improve their clinical practice and patient management during all phases of transplantation.

#### Course Objectives:

Following completion of the course, attendees should be able to:

- Identify areas of inequity in solid organ transplantation.
- Discuss factors that contribute to metabolic dysfunction-associated steatohepatitis in liver transplant recipients.
- Define alcohol hepatitis and identify the evaluation and management strategies that may improve patient outcomes as well as resources available.
- Recognize developmental barriers that may impact the transition from adolescent to adult transplant services.
- Identify criteria for bladder transplant candidacy and anticipated benefits over current treatment therapies.
- Identify the significance and clinical application of nephro-genetics in kidney transplantation.
- Appreciate general innovations in perfusion technology and the impact on organ procurement and patient survival.
- Identify risks / benefits / side effects of GLP-1 agonists for treatment of obesity.
- Identify surgical procurement technology now available for heart and lung transplant.
- Identify mechanical circulatory support options for the pediatric pre-heart transplant patient population.

# 5th UCLA Solid Organ Transplant Symposium

## Innovations and Updates

### *An In-Person & Live Virtual Education Conference*

## Friday, June 6, 2025

7:00 Registration & Breakfast  
 7:50 Welcome & Introduction  
 8:00 Key Note Address  
**Health Equity and Transplantation**  
*Mikel Whittier, MD*

### SESSION I – Liver

Moderators: *Jasleen Singh, MD & Katherine Meneses, DNP FNP-BC CCTC*

8:45 **Managing Metabolic Dysfunction-Associated Steatohepatitis (MASH) in Liver Transplant Recipients**  
*Sammy Saab, MD, MPH, AGAF, FAGG, FAASLD, Sherona Bau, MSN, ACNP-BC, CNS-BCP & Mopelola Adetola Adeyemo, MD, PhD - (Dietitian /Nutritionist)*

9:15 **Improving Outcomes in Liver Transplant Candidates and Recipients with Alcohol-Related Liver Disease**  
*Akshay Shetty, MD*

9:45 **Easing the Adolescent to Adult Transition in Liver Transplant Recipients**  
*Robert Venick, MD*

10:15 Break

### SESSION II – Kidney

Moderators: *Patricia L. Weng, MD & H. Albin Gritsch, MD*

10:30 **Delayed Immunological Tolerance after Kidney Transplantation**  
*Jeffrey L. Veale, MD*

10:50 **Bladder Transplant**  
*Nima Nassiri, MD*

11:20 **Genetics and Kidney Health**  
*Anjay Rastogi, MD, PhD*

11:45 **Patient Experience**

11:50 **Question & Answer Session**

12:00 **Lunch Break**

### SESSION III – Thoracic

Moderators: *Juan Alejos, MD & Heather Barone, RN, MSN, CCTC*

1:00 **Bridging Patients to Transplant**  
*Ali Nsair, MD*

1:20 **CAS impacts/Case Study**  
*David M. Sayah, MD, PhD*

1:40 **Pediatric Assist Devices: How Low Can We Go?**  
*Reshma M. Biniwale, MD*

2:00 **Reproductive Considerations for Transplant Recipients**  
*Megan Kamath, MD*

2:20 **Question & Answer Session**

2:30 **Break**

### SESSION IV – Innovations

Moderators: *Douglas G. Farmer, MD, FACS & Jill Strejc, MSN, RN, MS, RD, CCTC*

**Perfusion Technology**

2:45 **Heart/Lung: Surgical Procurement Technology Innovations**  
*Abbas Ardehali, MD, FACS*

3:05 **Liver: OCS**  
*Samer Ebaid, MD*

3:25 **Surgical Innovations – Perfusion Technology Panel Discussion**

**Obesity Management of Transplant Candidates and Recipients**

3:40 **Nutrition- and Weight-Related Concerns in the Solid-Organ Transplant Patient Population**  
*Dana Ellis Hunnes, PhD, MPH, RD*

4:00 **Pharmacokinetics of Glucagon-Like Peptide-1 (GLP-1) Agonists**  
*Ted Sievers, PharmD*

4:20 **Pharmacologic Options for Managing Obesity in the Solid Organ Transplant Population**  
*Michael Garcia, MD*

4:40 **Obesity/GLP-1 – Panel Discussion**

4:45 **Final Questions & Closing Remarks**

5:00 **Adjourn – All attendees are welcome to attend our networking reception!**



## FACULTY

### COURSE CHAIRS

**Juan C. Alejos, MD**

**Abbas Ardehali, MD, FACS**

**Douglas G Farmer, MD, FASC, CTS**

**Hans A. Gritsch, MD, FASC**

**Erik Lum, MD, FASN, FNKF**

**Ali Nsair, MD**

**Anjay Rastogi, MD, PhD**

**Sammy Saab, MD, MPH, AGAF, FAASLD, FAGG**

**David Sayah, MD, PhD**

### TRANSPLANT ADMINISTRATION

**Laura Yost, MSHA**

**Emily Stimpson, RN, MSN, CCTC**

**Nick Feduska, Jr., MSHA**

### TRANSPLANT NURSE MANAGERS

**Heather Barone, RN, MSN, CCTC (Call team)**

**Melissa Dunbar Forrest, RN, BSN, CPTC (Kidney)**

**Stephanie Fraschilla, RN, MSN, CCTC (Quality and Compliance)**

**Melissa Moore, RN, MPH, CCTC (Heart/Lung)**

### TRANSPLANT NURSE COORDINATORS PLANNING COMMITTEE

**Natalie Bjelajac, FNP (Kidney)**

**Kelly Dempster, RN, MSN, CCTC (Liver)**

**Vilayphone Hwang, RN, MSN, NP, CCTC (Kidney)**

**Aaron Kaye, RN, BSN, CCRN, CCTC (Heart/Lung)**

**Christine Lee, RN, BSN, CCTC (Kidney)**

**Johanna Lyudmirsky, RN, BSN, CCTC (Liver)**

**Michelle Rivera, RN, MSN, CCTC (Kidney)**

**Jill Strejc, RN, MSN, MS, RD, CCTC (Kidney)**

---

### COURSE FACULTY

**Mopelola Adetola Adeyemo, MD, PhD**

Assistant Professor

Division of Clinical Nutrition

**Juan C. Alejos, MD**

Clinical Professor of Medicine\*

Medical Director of the Pediatric Heart

Transplant/Cardiomyopathy Program

Director of the Pediatric Pulmonary

Hypertension Program

President and Founder of Hearts with Hope Foundation

**Abbas Ardehali, MD, FACS**

Professor of Surgery and Medicine\*

Division of Cardiothoracic Surgery William

E. Connor Endowed Chair in Cardiothoracic

Transplantation Director, UCLA Heart, Lung, and

Heart-Lung Transplant Programs

**Sherona Bau, MSN, ACNP-BC, CNS-BC**

Hepatology Nurse Practitioner

UCLA Pflieger Liver Institute

**Reshma M. Biniwale, MD, MCHS, MS**

(she/her)

Health Sciences Clinical Professor of Surgery\*

**Samer Ebaid, MD, PhD, MS**

Assistant Professor of Surgery\*

**Douglas G. Farmer, MD, FACS, CTS**

Professor of Surgery

Surgical Director of Intestinal Transplant Program

Surgical Director, Pediatric Liver

Transplantation

Chief, Division of Liver and Pancreas

Transplantation

**Michael C. Garcia, MD**

Associate Professor of Medicine\*

UCLA Center for Human Nutrition

**H. Albin Gritsch, MD**

Health Sciences Clinical Professor of Urology\*

John Jergens Chair, Kidney Transplantation

Surgical Director, Kidney Transplantation

Department of Urology

**Dana Ellis Hunnes, PhD, MPH, RD**

Registered Dietitian

Ronald Reagan UCLA Medical Center

David Geffen School of Medicine at UCLA\*

# FACULTY

---

## COURSE FACULTY (continued)

**Megan Kamath, MD**

Assistant Clinical Professor of Medicine\*  
Ahmanson-UCLA Cardiomyopathy Center  
Mechanical Circulatory Support and Heart  
Transplantation Program

**Erik L Lum, MD, FASN, FNKF**

Associate Professor of Medicine\*  
Medical Director, HLA Incompatible Kidney  
Transplant Program. UCLA Kidney and Pancreas  
Transplant Program  
Medical Director, Kidney Transplant Tolerance  
Program. UCLA Kidney and Pancreas Transplant  
Program  
Medical Director, Bladder Transplant Program

**Katherine Meneses, DNP FNP-BC CCTC**

Transplant Coordinator III

**Nima Nassiri, MD**

Assistant Professor of Medicine and Surgery\*  
Surgical Director/ PI, Bladder Transplant  
Program  
Department of Urology  
Kidney Transplant Program

**Ali Nsaïr, MD**

Medical Director, Heart Transplantation  
and Mechanical Circulatory Support Device  
Services\*  
Heart Failure – Interventional Cardiology  
Broad Stem Cell Research Center

**Anjay Rastogi, MD, PhD**

Director | Nephro-Genetics Program  
Founder and Director | CORE Kidney Program  
Professor and Clinical Chief  
Division of Nephrology | Department of Medicine  
UCLA Health | DGSOM

**Sammy Saab, MD, MPH, AGAF, FACC, FAASLD**

Professor of Medicine and Surgery\*  
Medical Director, Pflieger Liver Institute  
Medical Director, Adult Liver Transplant Program  
Chief, Transplant Hepatology  
Head, Outcomes Research in Hepatology  
Adjunct Professor of Nursing

**David M. Sayah, MD, PhD**

Associate Clinical Professor of Medicine\*  
Medical Director, Lung and Heart-Lung  
Transplant Programs Division of Pulmonary &  
Critical Care Medicine

**Akshay Shetty, MD**

Assistant Professor of Medicine and Surgery\*

**Ted Sievers, PharmD**

Clinical Transplant Pharmacist  
Director, PGY2 Solid Organ Transplant Pharmacy  
Residency Program  
Ronald Reagan UCLA Medical Center

**Jasleen Singh, MD**

Assistant Clinical Professor of Medicine and  
Surgery\*

**Jill Strejcek, MSN, RN, MS, RD, CCTC**

Clinical Transplant Coordinator  
Kidney Transplant Program

**Jeffrey L. Veale, MD**

Professor of Medicine and Surgery\*  
Department of Urology  
Director, Kidney Exchange Program  
Program Director, Transplant Fellowship  
PI: Immune Tolerance Program  
Kidney Transplant Program

**Robert S. Venick, MD**

Professor of Pediatrics and Surgery\*

**Patricia L. Weng, MD**

Assistant Clinical Professor of Pediatrics -  
Nephrology\*  
Medical Director, Pediatric Kidney Transplant  
Program

David Geffen School of Medicine at UCLA\*

---

## KEYNOTE SPEAKER

**Mikel Whittier, MHA**

UCLA Health Director, Health Equity, Diversity and Inclusion

# 5th UCLA Solid Organ Transplant Symposium

## Innovations and Updates

### *An In-Person & Live Virtual Education Conference*

#### FRIDAY, JUNE 6, 2025

#### **In-Person & Live Virtual Conference Fee:**

Registration: \$75

Students: \$30

#### **Location**

Ronald Reagan UCLA Medical Center

Tamkin Auditorium (B-Level)

757 Westwood Plaza

Los Angeles, CA 90095

#### **Parking and Directions**

From the 405 freeway, exit Wilshire Blvd., East toward Westwood. Turn left on Westwood Blvd., travel past Charles E. Young Dr. South and turn left on "Structure 8 driveway". Visitor parking is available in Lot 8 at a rate of \$16 for the day. Please use the pay-by-plate stations to purchase your parking permit. The Ronald Reagan UCLA Medical Center is located on the corner of Westwood Plaza and Charles E. Young Dr. South.

#### **The 5th UCLA Solid Organ Transplant Symposium will also be available through a live virtual meeting web platform.**

- Attendees who choose to attend the virtual activity will receive a virtual meeting link and password to access the live virtual conference.
- All registrants (live or virtual) will be provided the opportunity to review recorded sessions up to 3 weeks following the conference.
- The recorded sessions are not approved for Continuing Education (CE) credit.

#### **Refunds**

Cancellations must be received by May 16, 2025 and will be subject to a \$25 processing fee. No refunds will be granted after that date. David Geffen School of Medicine at UCLA reserves the right to cancel or postpone this course if necessary; in the event of cancellation, course fees will be fully refunded. We are not responsible for other costs, such as non-refundable airline tickets or hotel penalties.

**In-Person attendees will be provided breakfast, lunch and refreshments at the conference. All are welcome to attend our reception held following the conference.**

#### **Enrollment**

Online: Click the link to register <https://ucla.cloud-cme.com/SolidOrgan25>

We accept Visa, MasterCard, American Express, Discover credit cards, and ACH/electronic transfer.

Any questions, please email the UCLA CCPD Office at [ccpd@mednet.ucla.edu](mailto:ccpd@mednet.ucla.edu), or call 310-794-2620

**Early registration is recommended, as space is limited.**

## 5th UCLA Solid Organ Transplant Symposium Innovations and Updates

C13902

Friday, June 6, 2025

### In-Person & Virtual Registration Fee

Registration: \$75

Students: \$30



### In-Person Only

Transplant Networking Event (In-Person Only): \$0

*Please join us at the conclusion of the symposium for our transplant networking event. Capacity is limited.*

We accept Visa, MasterCard, American Express, and Discover credit cards.

To register using a credit card or ACH/electronic transfer, please visit <https://ucla.cloud-cme.com/SolidOrgan25>

*\*Credit card and check payments via phone, fax, or mail are no longer accepted.*

## Questions

If you have questions about enrollment, please call (310) 794-2620 or email: [ccpd@mednet.ucla.edu](mailto:ccpd@mednet.ucla.edu).

### Accreditation Statement

The David Geffen School of Medicine at UCLA is accredited by the Accreditation Council for Continuing Medical Education to provide continuing medical education for physicians.

The David Geffen School of Medicine at UCLA, designates this live activity for a maximum of 7.75 AMA PRA Category 1 Credits™. Physicians should claim only the credit commensurate with the extent of their participation in the activity.

The California State Board of Registered Nursing accepts courses approved by the AMA PRA Category 1 Credits™ as meeting the continuing education requirements for license renewal. Nurses from states other than California should inquire with their local State Board for specific continuing education policies.

The American Board for Transplant Certification (ABTC) has approved this educational offering for up to 7.75 Category One Continuing Education Points for Transplant Certification (CEPTCs).

### Disclosure Statement

The FDA has issued a concept paper that classifies commercial support of scientific and educational programs as promotional unless it can be affirmed that the program is truly independent and free of commercial influence. In addition to independence, the FDA requires that non-promotional, commercially supported education be objective, balanced and scientifically rigorous. The policy further states that all potential conflicts of interest of the CME staff and faculty be fully disclosed to the program's participants. In addition, Accreditation Council for Continuing Medical Education policy mandates that the provider adequately manage all identified potential conflicts of interest prior to the program. UCLA fully endorses the letter and spirit of these concepts.